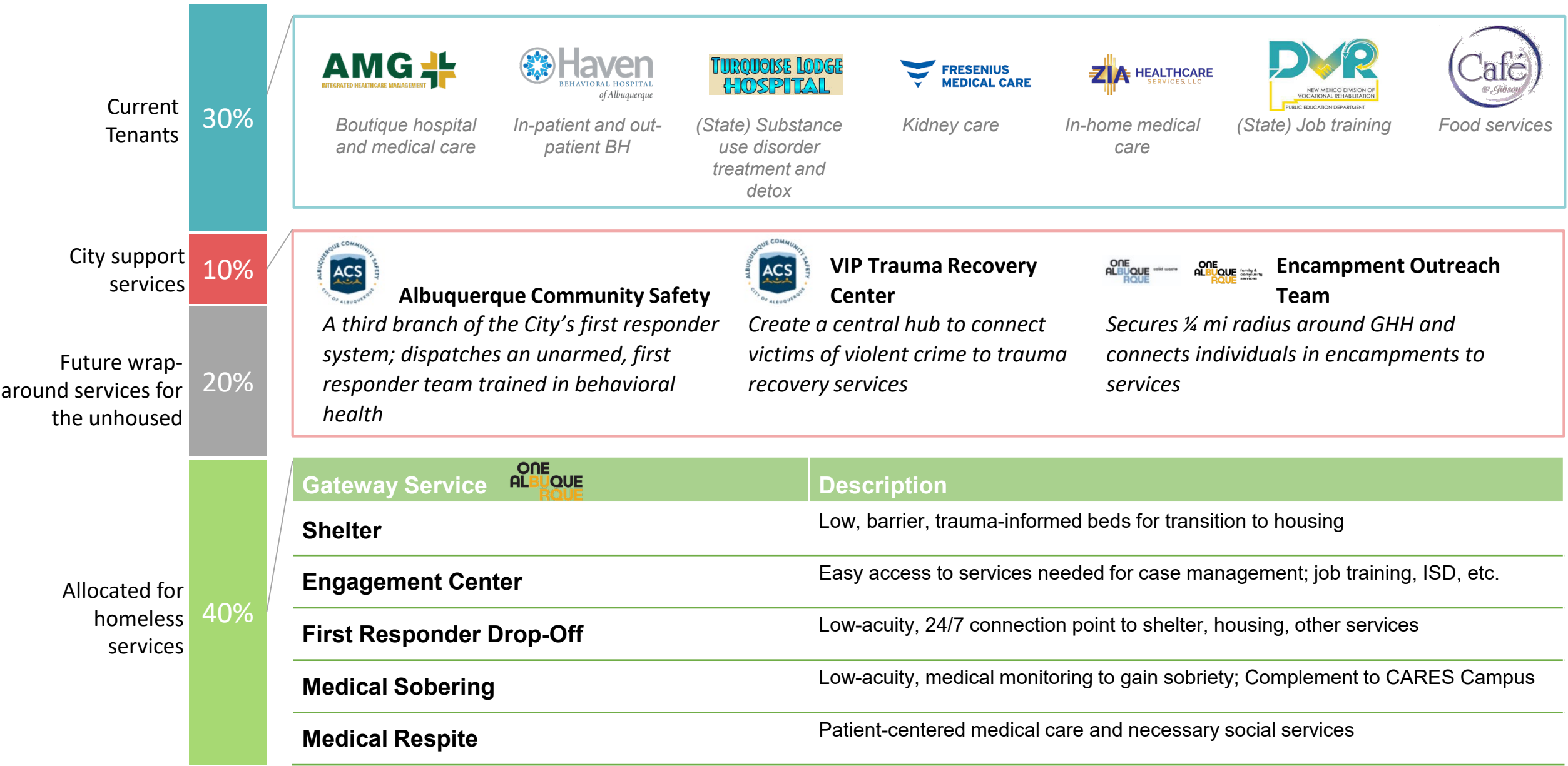




# Gateway



# Gateway offers many services for health and healing



# Gateway Map

First Floor  
**TURQUOISE LODGE HOSPITAL**

Third Floor  
**AMG**  
 INTEGRATED HEALTHCARE MANAGEMENT

Fourth Floor  
**Haven**  
 BEHAVIORAL HOSPITAL  
 of Albuquerque

ONE ALBUQUE RQUE  
 MEDICAL RESPITE  
 (±15,300 SF)

ONE ALBUQUE RQUE  
 GATEWAY CENTER PHASE 1  
 TOTAL AREA: ±19,284 SF

ONE ALBUQUE RQUE  
 GATEWAY CENTER PHASE 2

TRAUMA RECOVERY  
 TOTAL AREA: ± 6,879 SF



SOBERING  
 (±7,000 SF)  
 ONE ALBUQUE RQUE

INTAKE +  
 FIRST RESPONDER ENTRY

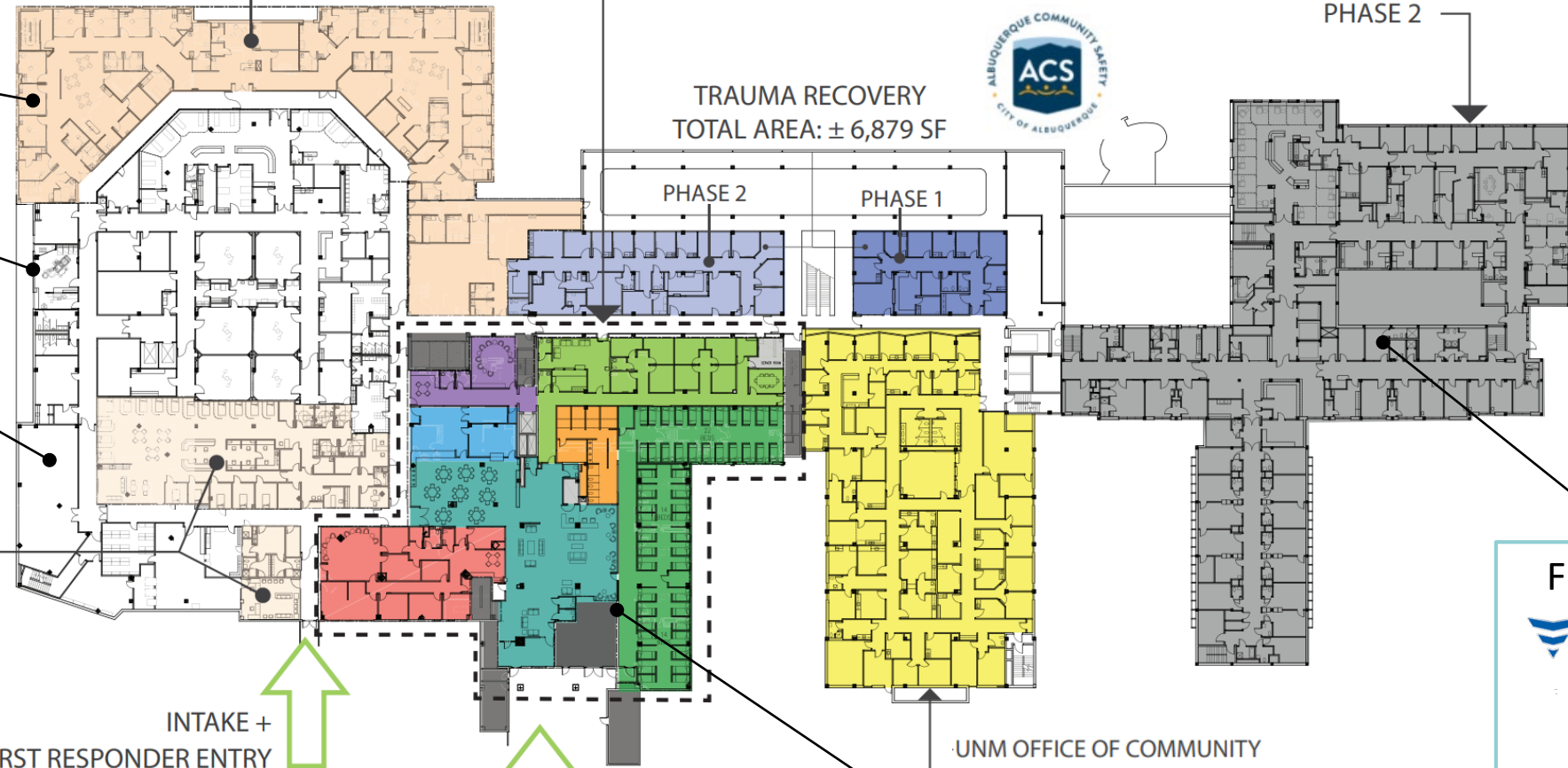
ONE ALBUQUE RQUE

RESIDENT ENTRY

UNM OFFICE OF COMMUNITY  
 HEALTH (PATHWAYS)  
 TOTAL AREA: ± 13,500 SF

First Floor  
**FRESENIUS MEDICAL CARE**  
**Café**  
 @ Haven

First Floor  
**DVR**  
 NEW MEXICO DIVISION OF  
 VOCATIONAL REHABILITATION  
 PUBLIC EDUCATION DEPARTMENT  
**ZIA HEALTHCARE SERVICES, LLC**



# Key services on deck will work together

**First Responder Drop- Off**  
24/7 connection point to other services

**Overnight beds**  
low-barrier, trauma informed beds



**Other service provider locations** (Other shelters, hospitals, CARE Campus, etc.)

**Engagement Center**  
Job training, case management, etc.

**Medical Respite**  
Short - term medical residential care

**Medical Sobering**  
Low-acuity substance sobering center

**Trauma Recovery Center**  
Connection to services for victims of violent crime

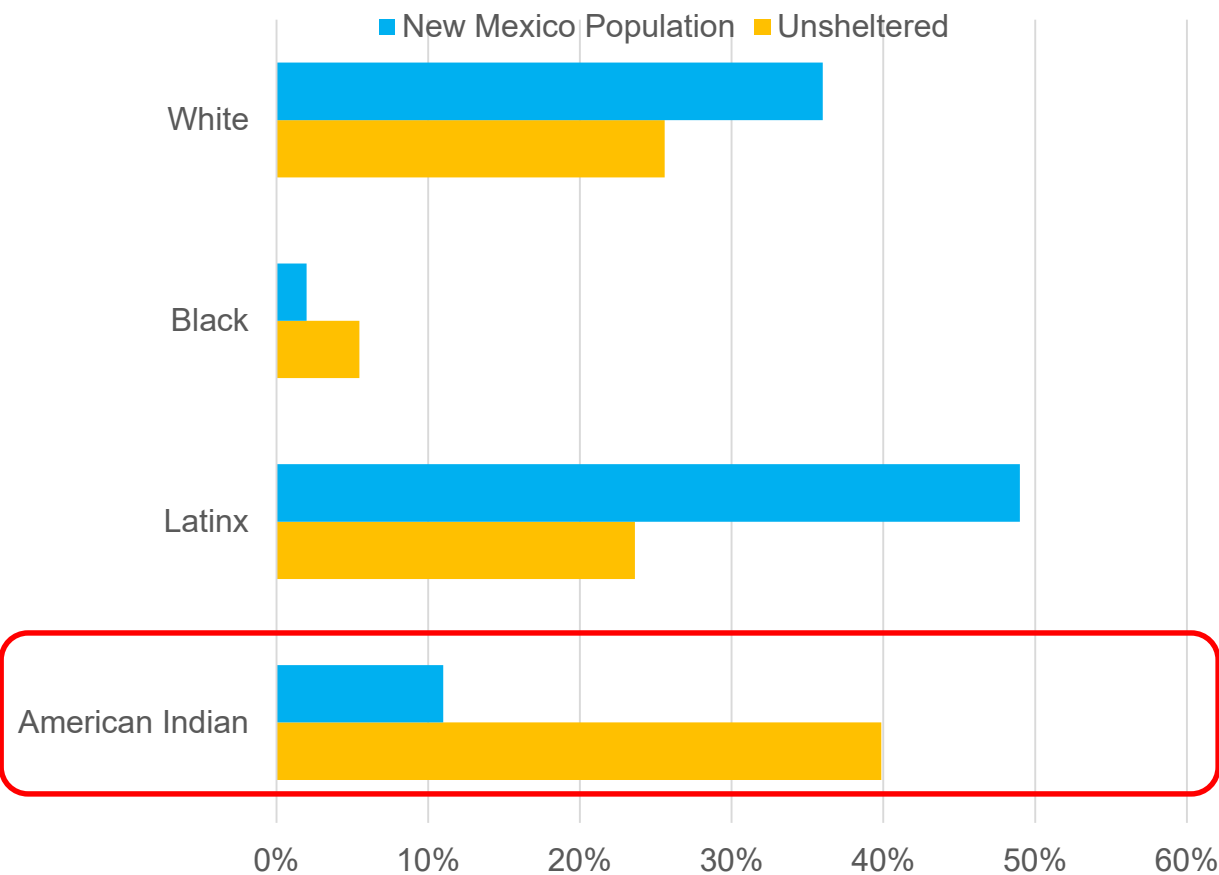
**Other GHH Services**  
Haven Behavioral, Turquoise Lodge, AMG, etc.

## Mission

*Provide a trauma-informed shelter where **all people** feel comfortable to rest safely, find healing, and leave with a stable housing option*



# American Indians are an overrepresented group among the Homeless population

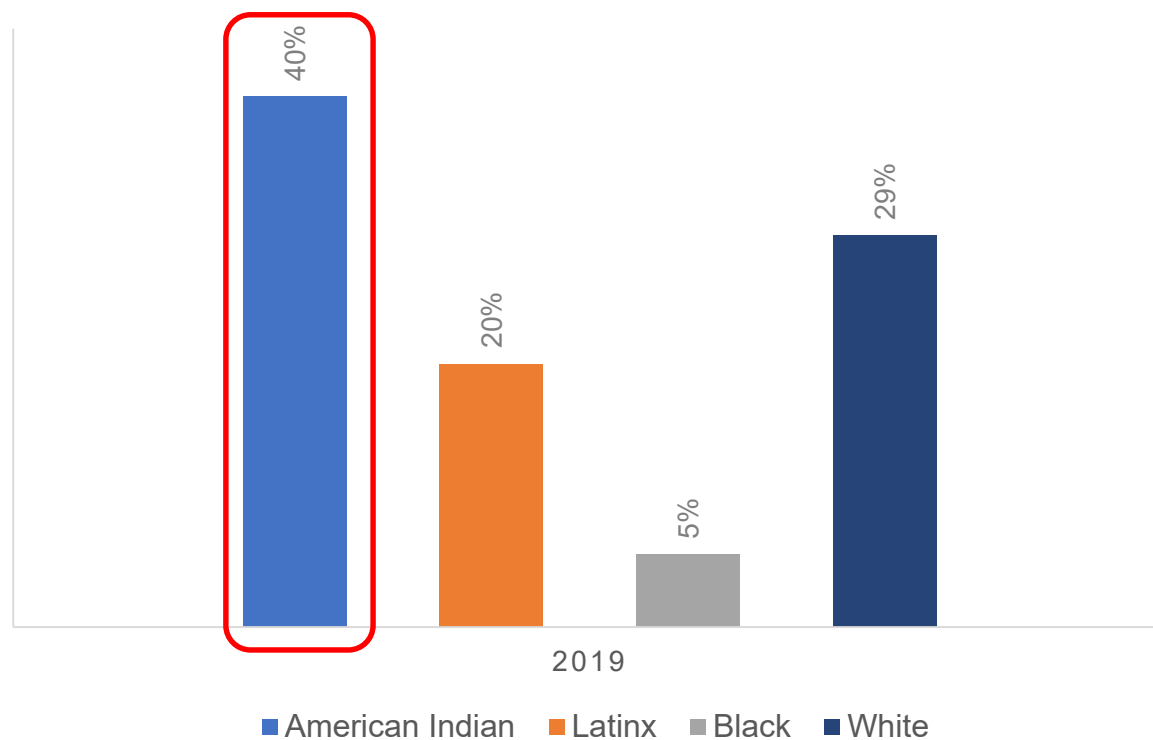


Demographic	Unsheltered	New Mexico Population	Ratio
White	26%	36%	~ 1:2
Black	5%	2%	2.5 : 1
Latinx	24%	49%	~ 1:2
American Indian	40%	11%	4:1

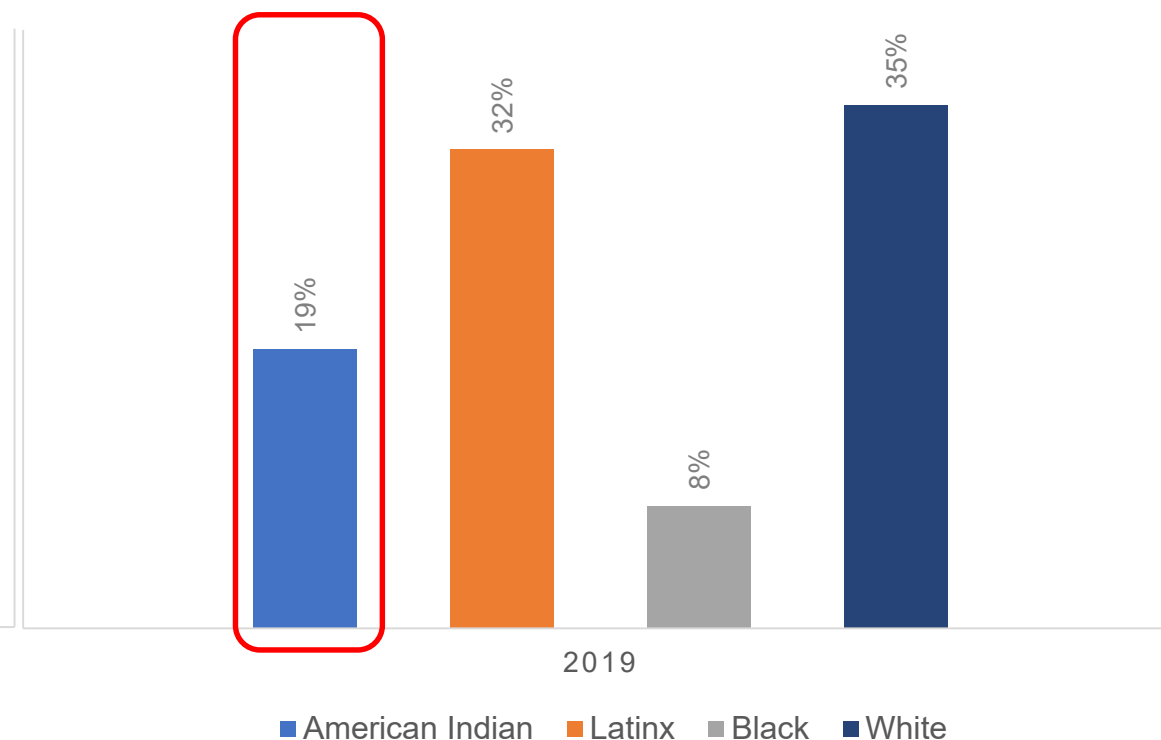
“2019 Point-in-time Count.” New Mexico Coalition to End Homelessness. July 2019. <https://www.cabq.gov/family/documents/2019-albuquerque-pit-count-final.pdf>  
<https://www.census.gov/quickfacts/NM>

# PIT counts demonstrate a gap in service

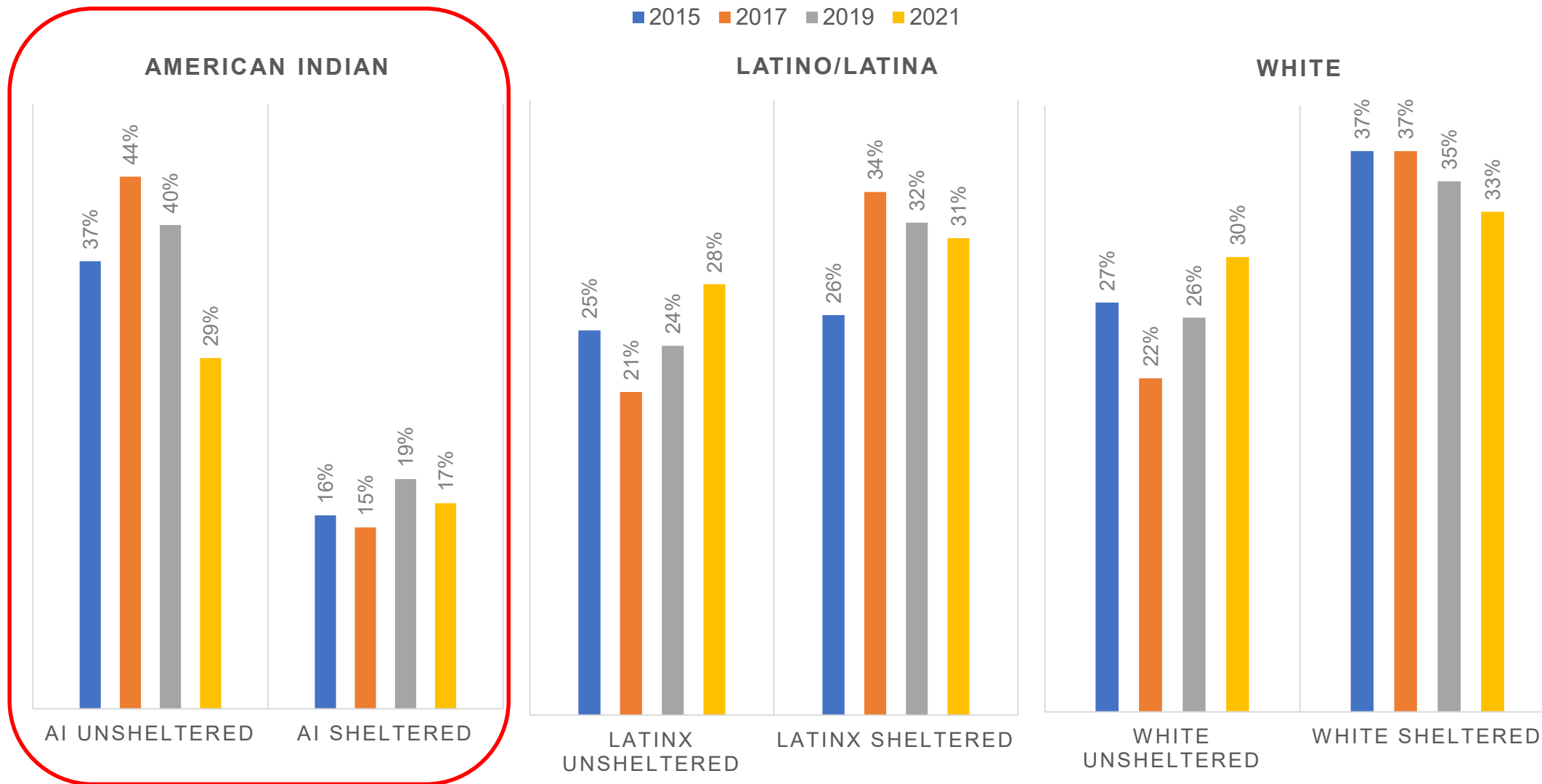
DEMOGRAPHIC BREAKDOWN OF PERSONS SLEEPING ROUGH



DEMOGRAPHIC BREAKDOWN OF PERSONS SLEEPING AT EMERGENCY SHELTERS



# The difference is consistent across years





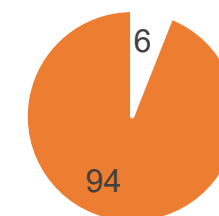
# American Indian women are the most vulnerable

## Unhoused population

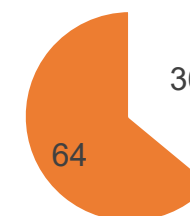
Demographic	Women	Men	Women: Men
American Indian*	59	113	1:2
Latinx/ White combined	57	153	1:3
Black	3	19	1:7
Totals	119	286	1:2

- Native women experience more sexual violence on the streets than women in general

Native American Women



All Women



[Urban Indian Health Institute](#) and [Clavo et. al 2021](#)

- 38% percent of all domestic violence victims become homeless at some point in their lives. ([US Department of Health and Human Services](#))
- American Indian Women suffer domestic violence and physical assault as much as 50% higher than the next most victimized demographic ([Bureau of Justice Statistics, DOJ](#))

\*Of the total transgender individuals, 90% were Native American. Transgender population makes up less than 3% of population.



# Appendix



# Services will be offered thousands of times to hundreds of people

Building/Campus Capacity 1,000 per day

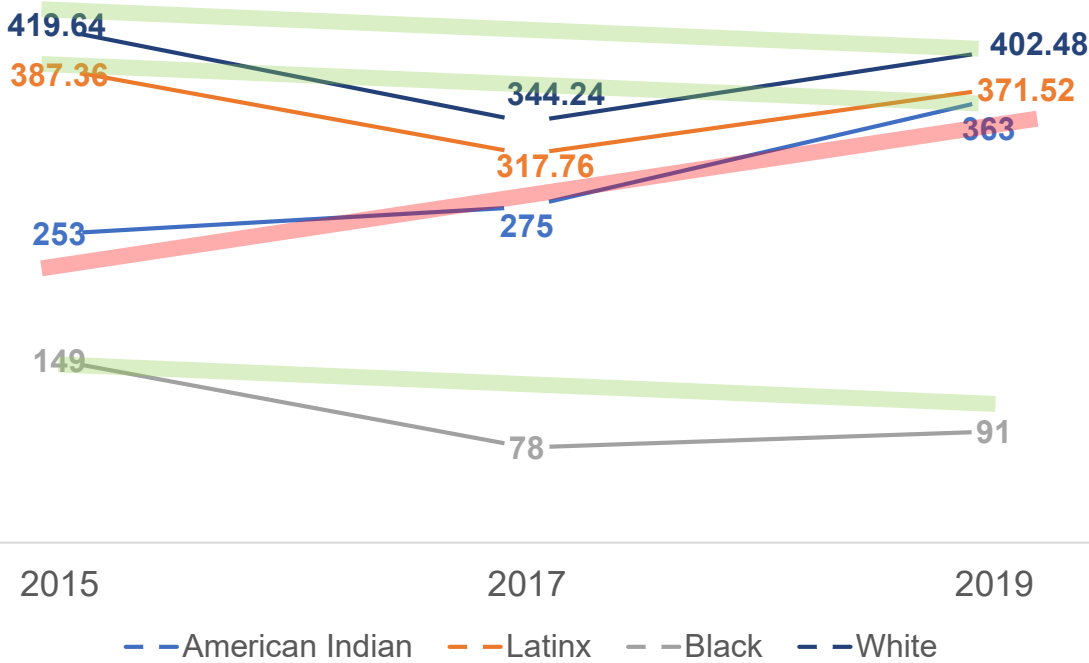
## Breakdown

Service	Capacity	Yearly Impact
Tenants	400 offices/ beds	<b>Thousands of people will be served</b>
City	100 offices	
<b>Homeless+ Services: *</b>		
<i>FY23 Phase I</i>	100 beds	
<i>FY24/25 Phase II</i>	200 beds	
<b>Total</b>	800 offices/ beds	

<b>* Homeless+ Services breakdown:</b>	Capacity	Yearly Impact
<i>Emergency Overnight Beds</i>	250 beds	1,000 individuals
<i>Engagement Center</i>	20 offices	1,000 individuals
<i>First Responder Drop-Off</i>	4 beds + intake area	1,500 connections/ transports to needed services
<i>Medical Sobering</i>	40 beds	14,000-16,000 overnight stays
<i>Medical Respite</i>	40 beds	320 individuals

# AI is the fastest growing homeless population

NUMBER OF INDIVIDUALS EXPERIENCING HOMELESSNESS (SHELTERED + UNSHELTERED)



Demographic	% increase from 2015-2019
American Indian	+43%
Latinx	-4%
White	-4%
Black	-39%
Asian (from 8 to 13 individuals)	63%

# Lived Experience Design

It has to feel like home...

Design workshops with people experiencing homelessness in Albuquerque to inform the architectural and programmatic layout of the Gateway Center at Gibson Health Hub

2021–2022



City of Albuquerque Family & Community Services

With special thanks to:

Marian Olewine UNM Epic Program

Casa Q, Compassion Services Center, First Nations, and Transgender Resource Center

Contact information:

Cristina Parajon: cparajon@cabq.gov  
400 Marquette NW  
Albuquerque NM 87102

## Executive Summary

Over 5,600 households experience homelessness in Albuquerque, with numbers rising to a growing need, there are limited options for the provision of comprehensive services.

Trauma-informed care and design has proven to improve recovery outcomes for people experiencing homelessness. As part of the solution, the City of Albuquerque plans to build a low-barrier shelter for 100 single adults and 25 families called the Gateway Center.

**Formed Solution:** Recognizing the importance of unhoused individuals as stakeholders in the shelter, the City of Albuquerque worked with key community partners to conduct design workshops with 28 individuals experiencing homelessness. A special effort was made to include Native American demographics since these populations are disproportionately impacted by homelessness. Using a participatory methodology with facilitated discussion, participants themselves drew floor plans, room layouts, and decorative elements to give their vision for the Gateway Center.

The following are the key findings that will be used to inform the design of the Gateway Center:

Findings	Recommendations for Program Design	Example
Comfort: The need to feel like home is in emphasis and design.	<ul style="list-style-type: none"> <li>Allow individuals to “re-arrange” furniture within the walls of their sleeping space</li> <li>Provide a range of sleeping options such as those outdoors</li> <li>Provide a private bathroom option for transgender residents</li> </ul>	

exercise space such as a community garden, movie screenings in a well-lit library	Communal grill
open spaces with staff are easily accessible within the building and are friendly to all residents	A reclining tree with a small hedge in front to provide privacy
public artwork walls for reflection and a sweat lodge	Illustration of a sweat lodge outside

buildings, or in other locations not meant for human habitation. The actual numbers are not documented, but the Point-In-Time Count reports a self-disclosed incidence among the unhoused population as living with mental health issues at 45% and 43% report living with substance use issues.<sup>3</sup>

Albuquerque’s numbers aren’t much different than those in the rest of the United States. Figure 1 demonstrates how the number of unsheltered individuals experiencing homelessness rose 30% since 2015. Previously, the country saw a decline in homelessness for nine years. COVID-19, a shaky economy, and the scarcity of affordable housing may accelerate homelessness even further in the coming years. According to the National Alliance to End Homelessness, more than 6.3 million American households spend more than 50% of their income on housing putting them at high risk for eviction.

<https://www.cabq.gov/family/documents/albuquerque-affordable-housing-and-homelessness-needs-assessment.pdf>

<sup>3</sup> Point-In-Time Count, 2019: Albuquerque Continuum of Care, by the New Mexico Coalition to End Homelessness (NMCEH).

For both the housed and unhoused populations of Albuquerque. The updated plan will build on the historical uses of the shelter to provide essential services such as a Sobering Center, Medical Respite Center, Trauma Recovery Center, and the Gateway Center.

The Gateway Center will be part of the City’s commitment to homelessness and will feature a dedicated Engagement Center with service providers, and a First Responder Drop-Off shelter will have 100 beds for single adults and 25 rooms for families and a limited number of beds for couples and non-binary individuals. The City seeks to employ best practices in the design of the Shelter and Engagement Center by including trauma-informed/person-centered design and low-barrier access. To design to the individual, the City will be using the space and understanding the needs of the population. In such spaces, the City is using the need to get input on the cultural layout and interior design from the unhoused population of Albuquerque.

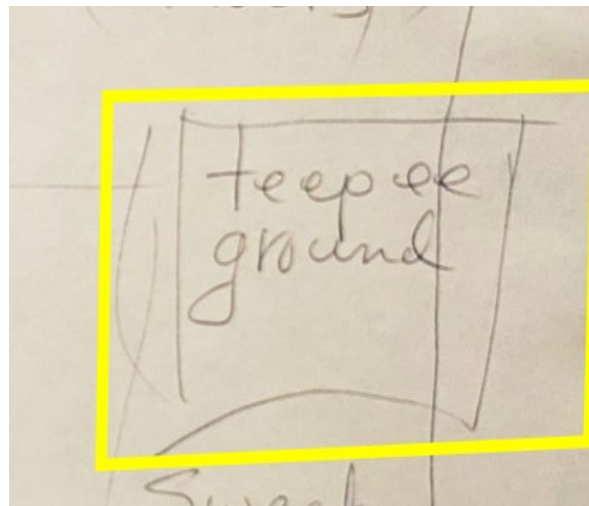
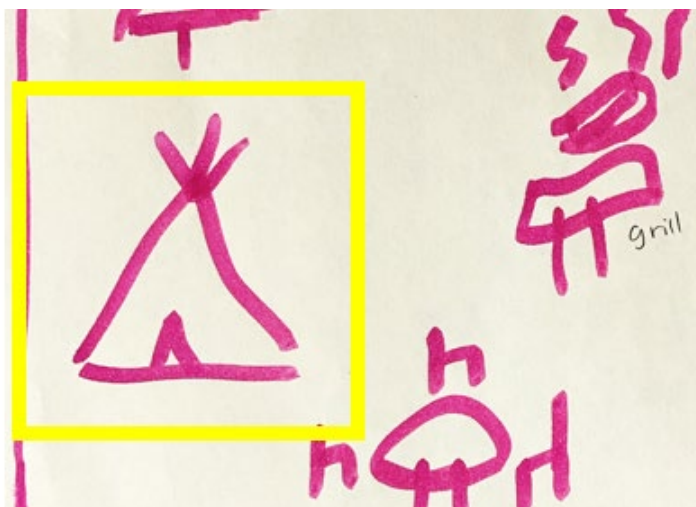
### Background Research

The City investigated the best possible way to design a shelter by gathering input from people experiencing homelessness on trauma-informed/person-centered design.

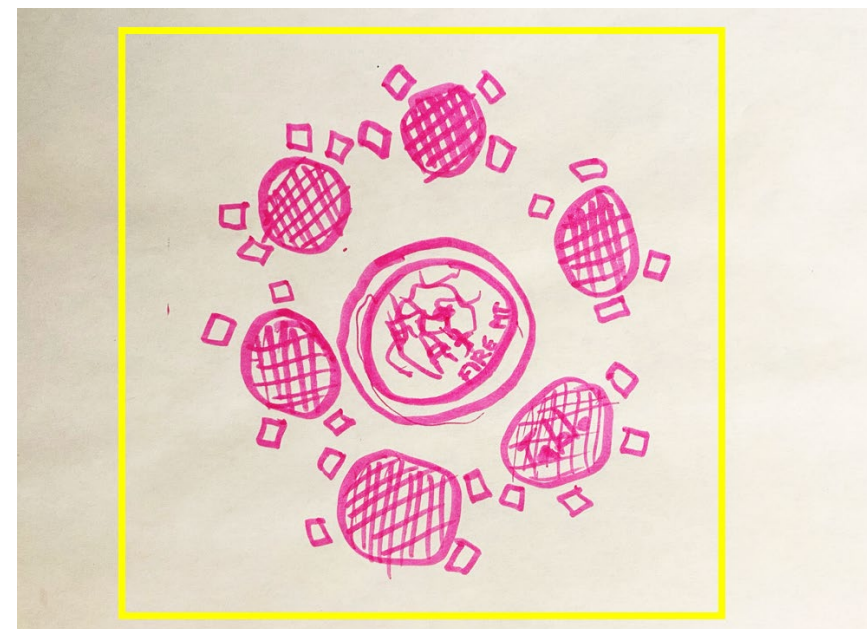
Trauma-informed Design (TiD) originates from trauma-informed care, which promotes interventions of healing and recovery rather than just symptom management.

Point-In-Time Count, 2019: Albuquerque Continuum of Care, by the New Mexico Coalition to End Homelessness (NMCEH).

# Choice, Comfort, Community



Choice to sleep outside

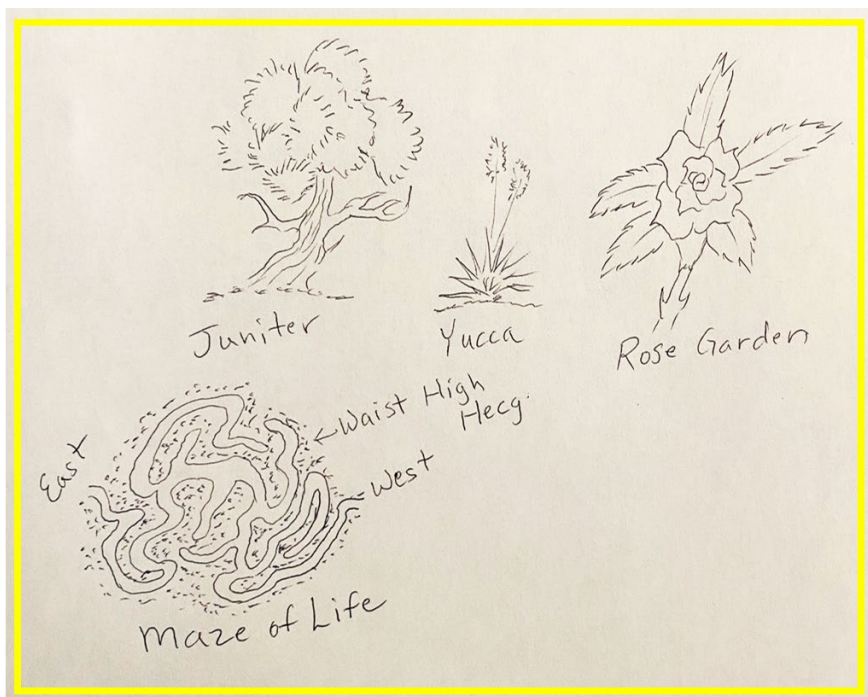


Symbolic Art

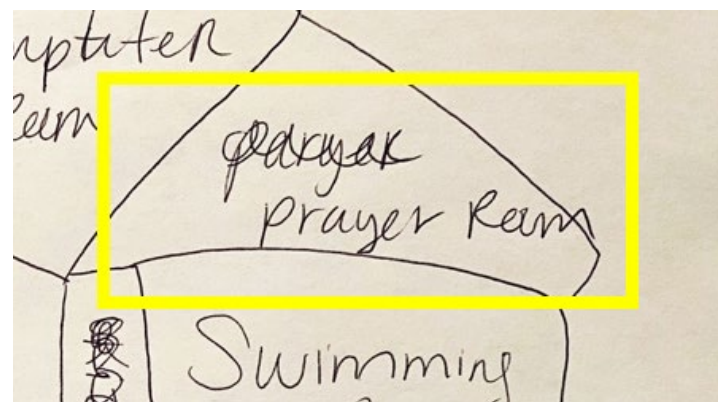
*When people have idle time, their unwanted thoughts come up and it gives them a reason to fight. It's dangerous because there is nowhere to put the brain power and that is why people do crazy things.*

# Healing

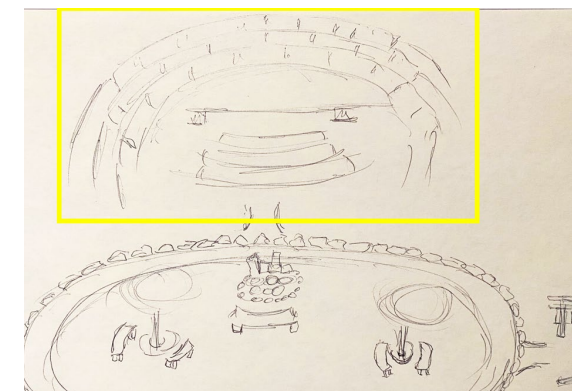
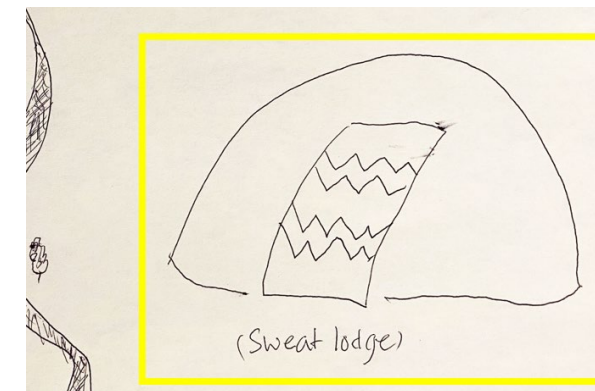
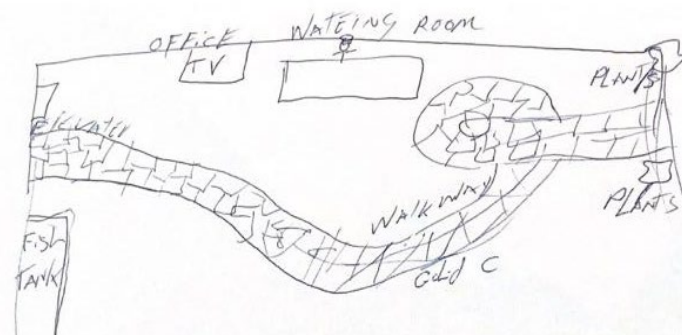
*We don't want a place where you just throw everyone in, it should be somewhere that gives you a positive thinking and that is the process of a shelter. It's somewhere where I can get spiritually healthy.*



Provide spaces for reflection such as meditation path



a dark quiet space or prayer room

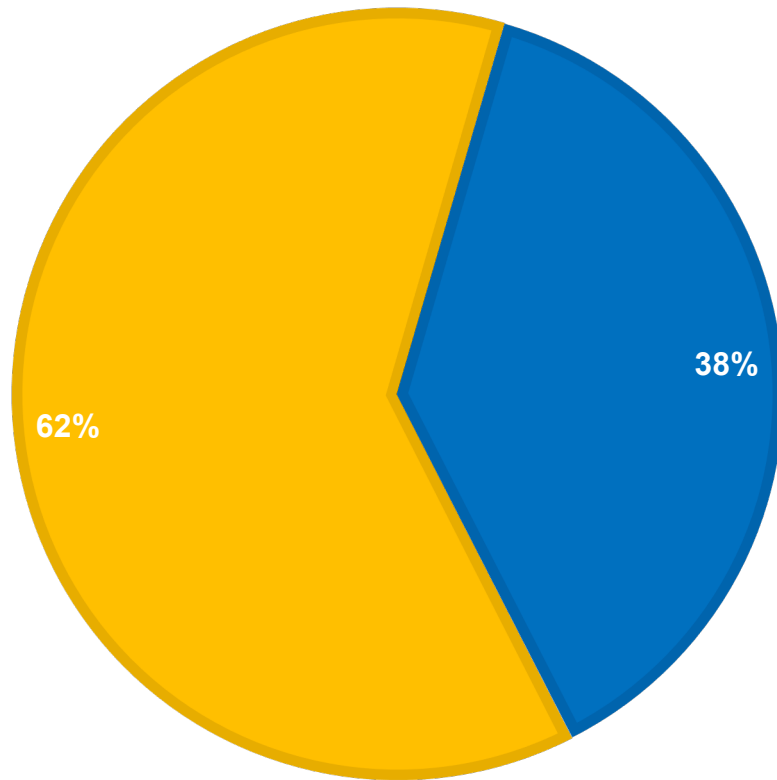


auditorium or performance space for ceremonies and a sweat lodge to fulfill sacred spiritual needs

# Demographics of who we will serve at Gateway

## POPULATION BREAKDOWN IN ALBUQUERQUE

from Albuquerque from New Mexico



## Origin locations

